



Mekong River Commission

**Weekly Dry Season Situation Report in
the Lower Mekong River Basin
28 November-04 December 2023**

Prepared by
The Regional Flood and Drought Management Centre
05 December 2023

The MRC is funded by contributions from its Member Countries and Development Partners, including Australia, Belgium, the European Union, Finland, France, Germany, Japan, Luxembourg, the Netherlands, Sweden, Switzerland, the United States and the World Bank.

Copyright © Mekong River Commission, 2020

First published (2020)

Some rights reserved.

This work is the product of the Mekong River Commission Secretariat. While all efforts are made to present accurate information, the Secretariat does not guarantee the accuracy of the data included in this work. The boundaries, colours, denomination, and other information shown on any map in this work do not imply any judgement on the part of the MRC concerning the legal status of any territory or the endorsement or acceptance of such boundaries.

Nothing herein shall constitute or be considered to be a limitation upon or waiver of the privileges and immunities of the MRC, all of which are specifically reserved.

This publication may be reproduced in whole or in part and in any form for educational or non-profit purposes without special permission from the copyright holder, provided acknowledgement of the source is made and notification is sent to the MRC. The MRC would appreciate receiving a copy of any publication that uses this publication as a source. This publication cannot be used for sale or for any other commercial purpose whatsoever without permission in writing from the MRC.

Title: Weekly Dry Season situation report in the Lower Mekong River Basin for 28 November-04 December 2023.

ISSN: 1728-3248

Keywords: River monitoring/drought/weather/the Mekong/the Tonle Sap Lake

For bibliographic purposes, this volume may be cited as:

Mekong River Commission. (2020). *Weekly dry season situation report in the Lower Mekong River Basin for 28 November-04 December 2023*. Vientiane: MRC Secretariat.

Information on MRC publications and digital products can be found at
<http://www.mrcmekong.org/publications/>

All queries on rights and licenses should be addressed to:

Mekong River Commission

Documentation and Learning Centre

184 Fa Ngoum Road, Unit 18, Ban Sithane Neua, Sikhottabong District, Vientiane 01000, Lao PDR

Telephone: +856-21 263 263 | E-mail: mrcs@mrcmekong.org | www.mrcmekong.org

Contents

- Figures..... 2**
- Table 3**
- Key Messages 4**
- 1 Introduction 6**
- 2 General Weather Patterns 7**
- 3 Water Levels in the Lower Mekong River 11**
- 4 Flash Flood in the Lower Mekong Basin 18**
- 5 Drought Monitoring in the Lower Mekong Basin..... 19**
- 6 Weather and Water Level Forecast and Flash Flood Information 22**
 - 6.1 Weather and rainfall forecast 22*
 - 6.2 Water level forecast 23*
 - 6.3 Flash Flood Information..... 24*
 - 6.4 Drought forecast 24*
- 7 Summary and Possible Implications 27**
 - 7.1 Rainfall and its forecast 27*
 - 7.2 Water level and its forecast 27*
 - 7.3 Flash flood and its trends..... 28*
 - 7.4 Drought condition and its forecast 28*

Figures

Figure 1: Summary of weather conditions over the LMB.	7
Figure 2: Outlook of wet and dry conditions over the Asian countries by ASMC.....	8
Figure 3: No tropical storm risk observed on 05 December 2023.	8
Figure 4: Weekly total rainfall at key stations in the LMB during 28 Nov- 04 Dec 2023	9
Figure 5: Weekly rainfall distribution over the LMB during 28 Nov-04 Dec 2023	10
Figure 6: Key stations and model application for River Monitoring and Flood Forecasting	11
Figure 7. Water level at the Jinghong hydrological station up to 04 December 2023.....	12
Figure 8. Water levels at Chiang Saen in Thailand and Luang Prabang in Lao PDR.	13
Figure 9. Water levels Vientiane and Paksane in Thailand and Lao PDR.	14
Figure 10: Water levels at Nakhon Phanom and Savannakhet of Thailand and Lao PDR. ...	14
Figure 11: Water levels at Stung Treng and Kratie on the Mekong River.	15
Figure 12: Seasonal change of inflows and outflows of Tonle Sap Lake.	16
Figure 13. The seasonal change in monthly flow volume of Tonle Sap Lake.....	17
Figure 14: Weekly standardised precipitation index from Nov 27 to Dec 3.	19
Figure 15: Weekly Index of Soil Water Fraction from Nov 27 to Dec 3.	20
Figure 16: Weekly Combined Drought Index duing Nov 27-Dec 3.	21
Figure 17: Accumulated rainfall forecast (24 h) based on the forecasting model using CHIRPS-GEFS.	23
Figure 18. Monthly forecast of CDI for Dec 2023, Jan and Feb 2024.....	25

Table

Table 1. The monthly change in the flow volume of Tonle Sap Lake. 17

Table 2. Weekly River Monitoring Bulletin. 26

Key Messages

Key messages for this weekly report are presented below.

Rainfall and its forecast

- During November 28-December 04, rainfall concentrated from Khong Chiam to Tan low-lying area in Cambodia of the lower part of the Mekong River, varied from 1.00 mm to 40.00 mm.
- The Mekong region was influenced by north-easterly monsoon wind and the high-pressure system that came across from China to the central Viet Nam with active low-pressure in the Gulf of Thailand and the South China Sea. There will be low rainfall for the next 7 days over the lower part of the Mekong region from 05 to 11 December 2023.

Water level and its forecast

- The MRC's observed water level (WL) at Jinghong showed fluctuated level between 535.20 m and 535.73 during 28 November and 04 December 2023. The outflow varied from 820.00 m³/s to 1,170.00 m³/s between 18 November and 04 December 2023.
- Regardless the fluctuated outflow at Jinghong upstream, water level of monitoring station at Chiang Saen in Thailand went up about 0.05 m during the reporting period and stayed 1.33 m below its LTA, considered normal level (PMFM's indicator). Water levels at the monitoring stations at Chiang Khan in Thailand decreased about 0.82 m, staying 1.77 m below its LTA value, while at Vientiane in Lao PDR it decreased about 0.49 m and stayed about 0.53 m lower than its LTA value. The current WL at Nong Khai in Thailand was about 1.75 m lower than its LTA value, while at Paksane in Lao PDR it was about 1.07 m lower than its LTA level, which considered normal level based on the PMFM's indicators. Water levels from Thailand's Nakhon Phanom to Savannakhet increased between 0.13 m and 0.18 m, while at Khong Chiam and Pakse decreased in between 0.50 m and 0.57 m. Water levels at these stations are staying lower than their LTA value. Water levels from the stretches of the river at Stung Treng is about 0.18 m lower than its LTA value, while at Kratie in Cambodia, moreover, is 0.24 m lower than its LTA value due to contributed inflows and some rainfall from the upstream part (at Pakse and 3S area in Viet Nam). WL at Kompong Cham is about 0.83 m lower than its LTA value.
- The flow volume of the Tonle Sap Lake was slightly higher than its LTA (about 107%) up to 04 December 2023, considered normal.
- The current water levels for most of the stations are below their LTA value, except at Luang Prabang. Water levels at the 2 tidal stations at Tan Chau and Chau Doc fluctuated between their LTA, maximum and minimum values, during this monitoring period.

- Over the next seven days, the water levels across most monitoring stations are expected to go down and will continue lower than their long-term average value in most stations.

Drought condition and its forecast

- During Nov 27-Dec 3, the LMB was facing from moderate to severe drought in the eastern and south-eastern areas covering Xaysomboun, Borikhamxay, Khammuane, Savanakheth, Saravane, Champasack, Attapeu, Nong Khai, Udon Thani, Sakon Nakhon, Yasothon, Ubon Ratchathani, Preah Vihear, Kampong Thom, Stung Treng, Ratana Kiri, Kratie, Gia Lai, and Kon Tum. The drought phenomenon was caused by over dried soil moisture which is considered normal during dry season.
- December is expected to bring moderate to severe drought conditions to certain areas in the north and south of the LMB, including Chiang Mai, Chiang Rai, Phayao, Xayaburi, Vientiane, Xaysomboun, Otdar Meanchey, Preah Vihear, and Siem Reap. January is forecasted to see severe drought in parts of Siem Reap and Kalasin, and moderate drought in Maha Sarakham, Surin, Nakhon Phanom, and Si Saket. February 2024, however, is not expected to have any drought in the LMB area. The forecast system does not yet detect the drought conditions in the Mekong Delta. The forecasting results will be updated monthly; however, the Mekong Delta may face double impacts of low flow and salinity intrusion for the dry season of 2024.

1 Introduction

This Weekly Dry Season Situation Report presents a preliminary analysis of the weekly hydrological situation in the Lower Mekong River Basin (LMB) for **28 November-04 December 2023**. The trend and outlook for water levels are also presented.

This analysis is based on the daily hydro-meteorological data provided by the Mekong River Commission (MRC) Member Countries – Cambodia, Lao PDR, Thailand, and Viet Nam – and on satellite data. Water level indicated in this report refers to an above zero gauge of each station.

The report covers the following topics that are updated weekly:

- General weather patterns, including rainfall patterns over the LMB
- Water levels in the LMB, including in the Tonle Sap
- Flash flood and drought situation in the LMB
- Weather, water level and flash flood forecast, and
- Possible implications.

Mekong River water levels are updated daily and can be accessed from:
http://ffw.mrcmekong.org/bulletin_wet.php.

Drought monitoring and forecasting information is available at:
<http://droughtforecast.mrcmekong.org>

Flash flood information is accessible at: <http://ffw.mrcmekong.org/ffg.php>

2 General Weather Patterns

The weather outlook bulletins for two months (November and December) and the weather maps issued by the Thai Meteorological Department (TMD) were used to verify weather conditions in the LMB.

Since the end of October 2023, the warm and wet weather have appeared because the influentially high-pressure air mass areas prevail over the LMB, with gradually decreasing water levels in both mainstream and tributaries. The data from the TMD predict that high pressure of air-mass will continue with warm weather condition in the upper part of Thailand, Lao PDR and Viet Nam. As a result, the temperature in the upper part of Thailand will drop gradually as commonly warm and cold weather, specifically at the upper portion of the northern and north-eastern parts together with cold weather in mountainous areas (within the Mekong region).

[Figure 1](#) presents the weather map during 27-30 November 2023, indicating that a high-pressure cell was active in the South-Sea of Viet Nam, but not impact on the LMB. Generally, the Mekong region was influenced by north-easterly monsoon wind and the high-pressure system pushed from China until southern Viet Nam. Under this weather condition, no rainfall occurred in most parts of LMB, except for light rain in southern parts of Cambodia, and southern and central Viet Nam.

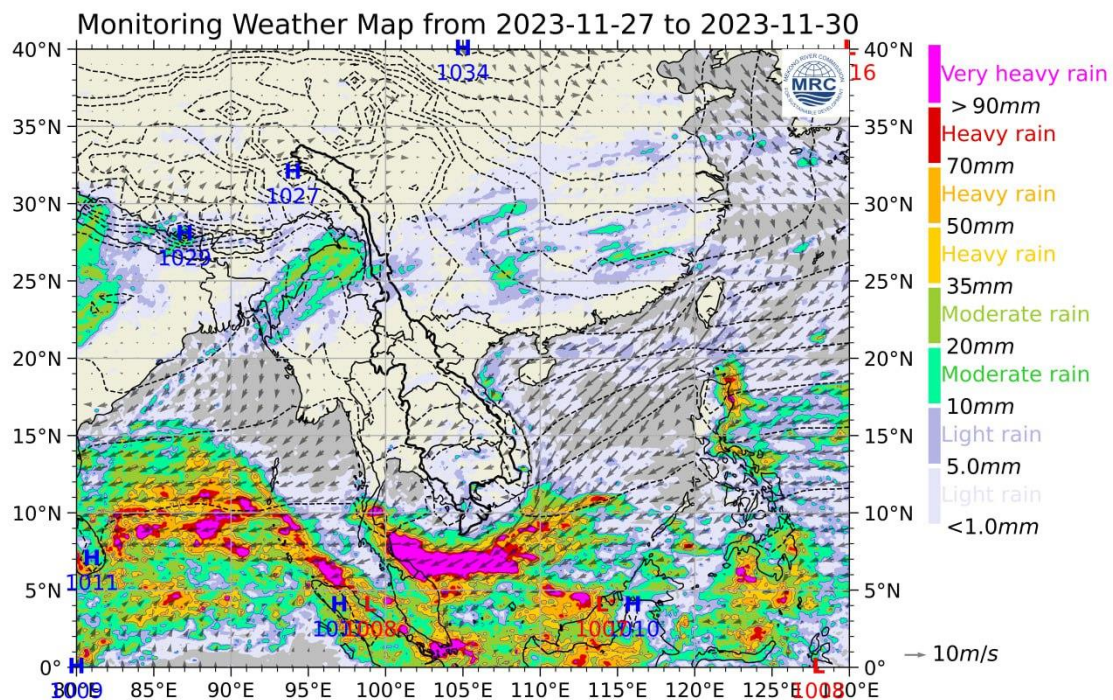


Figure 1: Summary of weather conditions over the LMB.

According to the ASEAN Specialised Meteorological Centre (ASMC), a highest probability of wet and warm conditions is predicted over the lower part of the Mekong region covering Lao PDR and Thailand from 27 Nov to 10 Dec 2023. **Figure 2** shows the outlook of weather condition from 27 November to 10 December 2023 in Southeast Asia based on results from the NCEP model (National Centres for Environmental Prediction).

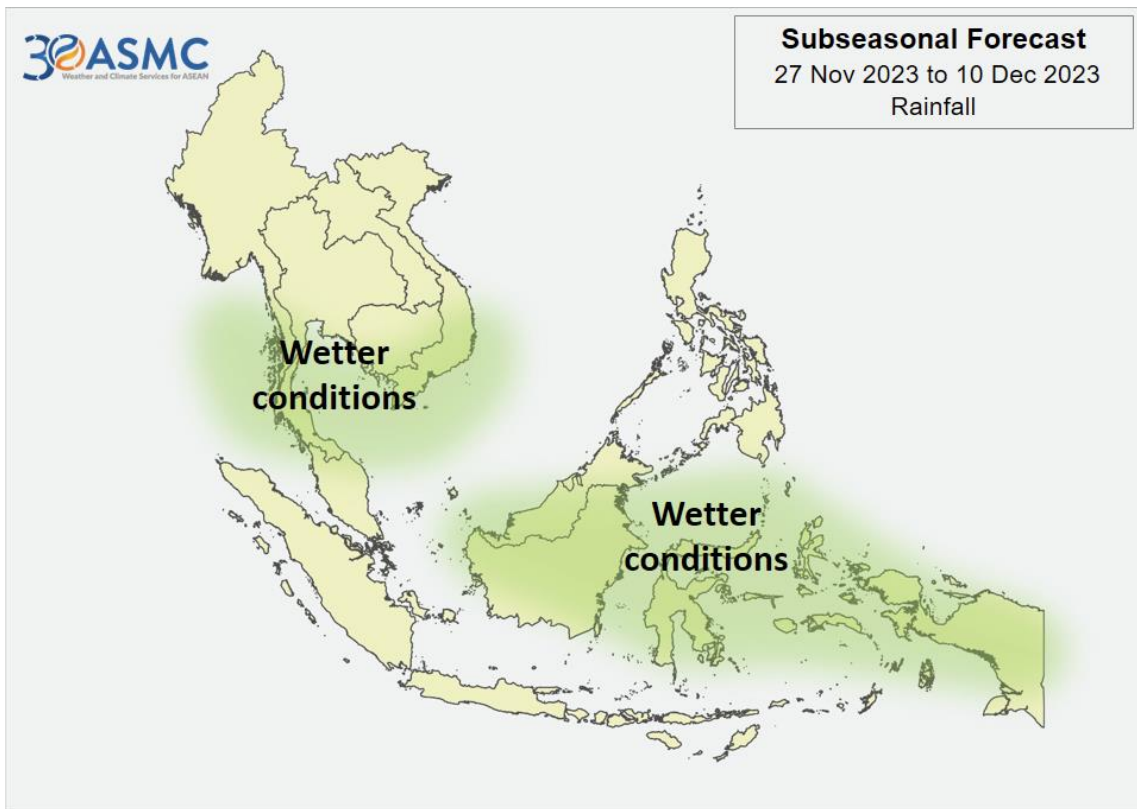


Figure 2: Outlook of wet and dry conditions over the Asian countries by ASMC.

Tropical depressions (TD), tropical storms (TS) and typhoons (TY)

There was a tracking storm covering the LMB during 28 November-05 December 2023, showing no low or high-pressure line over the LMB. No movement of storm was detected over South-Sea of Viet Nam as displayed in [Figure 3](#).

Active system as of 05 December 2023, 0:13 GMT

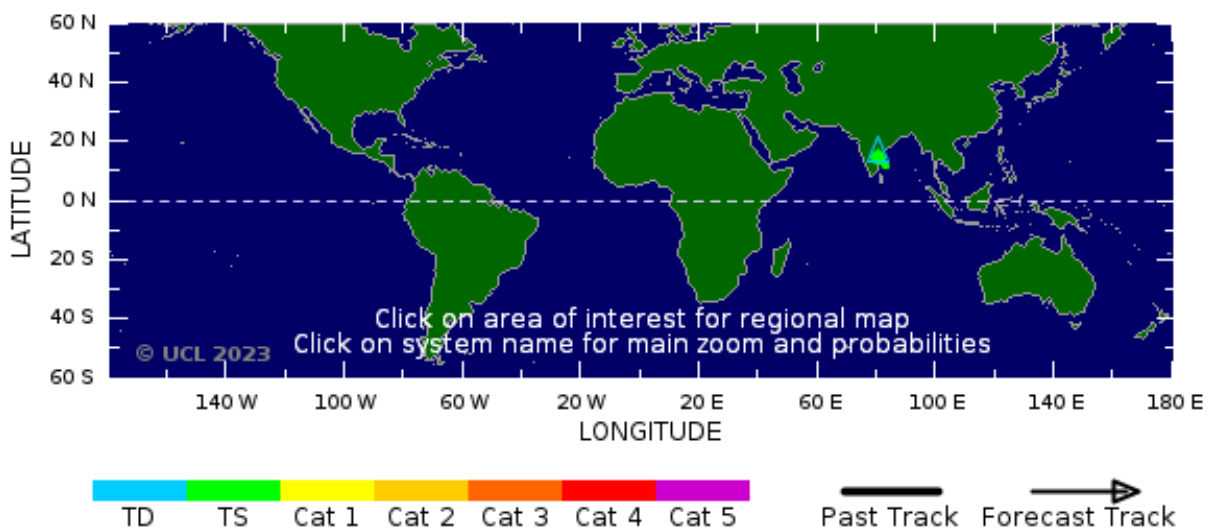


Figure 3: No tropical storm risk observed on 05 December 2023.

Rainfall patterns over the LMB

This week from 28 Nov to 04 Dec 2023, rainfall was observed at Khong Chiam in Cambodia to Stung Treng, Chaktomuk, Koh Khel and Neak Luong in Cambodia along the Mekong River of the Lower Mekong Basin (LMB), varied between 1.00 mm and 40.00 mm. This week rainfall was concentrated from in the low-lying area of the Mekong River. Rainfall gradually decreased in the Mekong region for the sign of Dry Season process. The total rainfall of this week report in the Mekong region compared with last week and its long-term-average (LTA) is showed in [Figure 4](#).

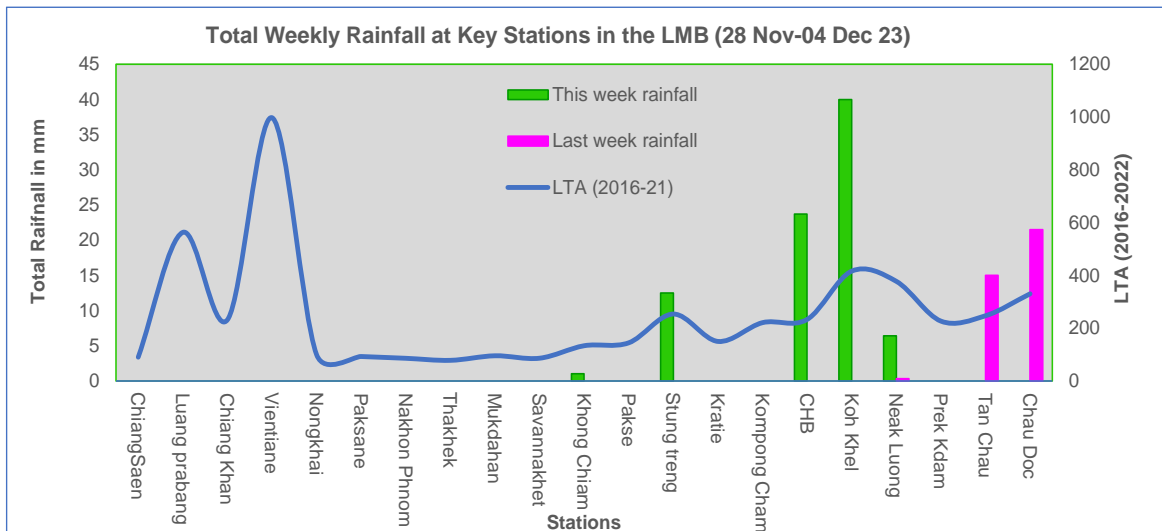


Figure 4: Weekly total rainfall at key stations in the LMB during 28 Nov- 04 Dec 2023

To verify area rainfall distribution, [Figure 5](#) shows a map of the weekly accumulated rainfall based on the observed data provided by the MRC Member Countries – Cambodia, Lao PDR, Thailand, and Viet Nam – from 28 November to 04 December 2023.

Absence of rain this week at some parts in the LMB is an indication of the nearly end of the rainy season in the LMB.

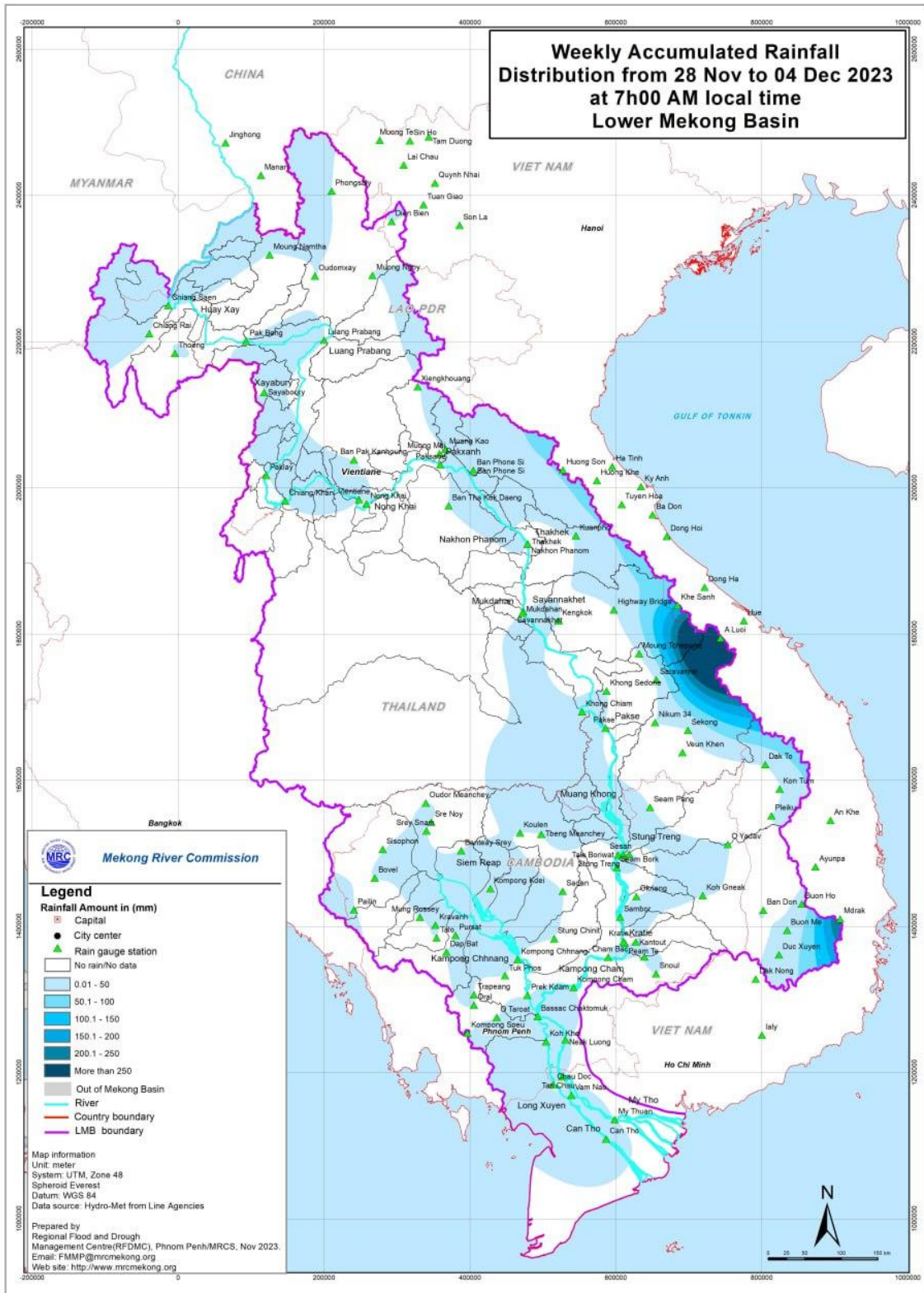


Figure 5: Weekly rainfall distribution over the LMB during 28 Nov-04 Dec 2023

3 Water Levels in the Lower Mekong River

The hydrological regimes of the Mekong mainstream are illustrated by recorded water levels and flows at key mainstream stations: at Chiang Saen to capture mainstream flows entering from the Upper Mekong Basin (UMB); at Vientiane to present flows generated by climate conditions in the upper part of the LMB; at Pakse to investigate flows influenced by inflows from the larger Mekong tributaries; at Kratie in Cambodia to capture overall flows of the Mekong Basin; and at Viet Nam’s Tan Chau and Chau Doc to monitor flows to the Delta.

The key stations along the LMB and their respective model application for River Flood Forecasting during the wet season from June to October and River Monitoring during the dry season from November to May are presented in [Figure 6](#). The hydrograph for each key station is available from the MRC’s River Flood Forecasting: <http://ffw.mrcmekong.org/overview.php>. The weekly water levels and rainfall at each key station are summarised in **Annex A**.

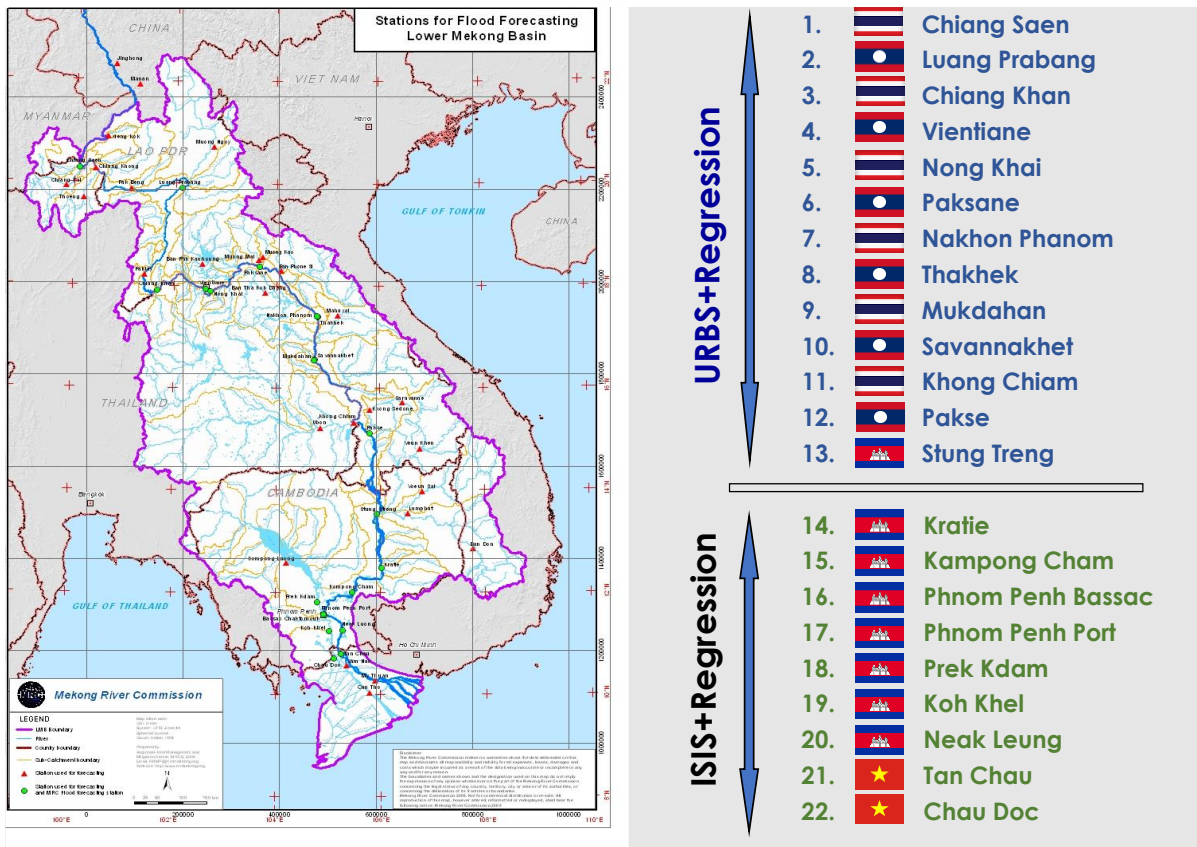


Figure 6: Key stations and model application for River Monitoring and Flood Forecasting

The MRC’s observed water level (WL) at Jinghong showed the fluctuated values between 535.20 m and 535.73 m from 28 November to 04 December 2023 (recorded on 7:00 am). The outflow varied from 808.00 m³/s to 1170.00 m³/s between 28 November and 04 December 2023.

Figure 7 below presents water level that decreased at the Jinghong hydrological station¹, indicating the trend of fluctuating water level up to 04 December 2023.

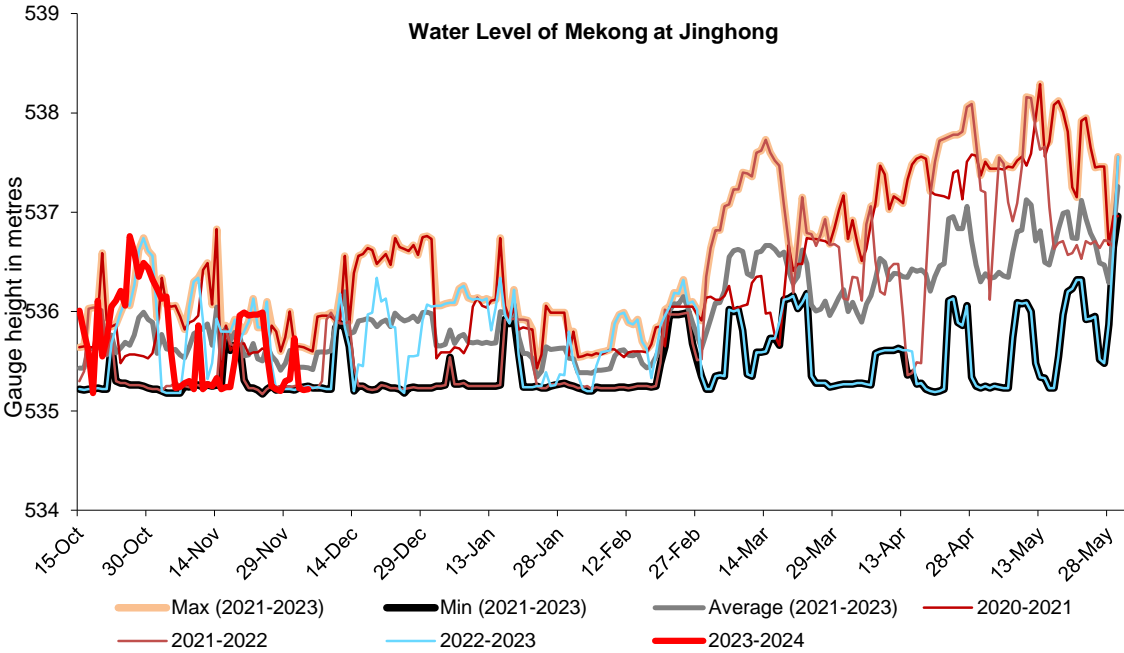


Figure 7. Water level at the Jinghong hydrological station up to 04 December 2023.

Regardless the fluctuated outflow from Jinghong upstream, water level of monitoring station at Chiang Saen in Thailand increased 0.02 m (nearly stable) from 28 Nov to 04 Dec 2023 and stayed about 1.33 m lower than its long-term average (LTA), which considered normal based on the PMFM indicators. Water levels at the monitoring station at Chiang Khan in Thailand decreased about 0.82 m and stayed 1.77 m lower than its LTA, while at Vientiane in Lao PDR it decreased about 0.49 m and stayed about 0.53 m lower its LTA value, considered normal water levels. The current water levels at Nong Khai in Thailand, however, decreased 0.40 m but stayed 1.75 m lower than its LTA, while at Paksane in Lao PDR it decreased about 0.06 m and stayed 1.07 m lower than its LTA value. WLs at these stations were considered normal based on the PMFM indicators. Water levels from Nakhon Phanom to Savannakhet increased between 0.10 m and 0.18 m, while at Khong Chiam and Pakse decreased between 0.50 m and 0.60 m. Water levels at these stations are staying below their LTA values. Water levels from the stretches of the river from Stung Treng to Kratie in Cambodia were decreasing by 0.10 m and 0.47 m respectively. The water levels at Kompong Cham decreased about 0.48 m due to low inflow and less rainfall from the upstream part. WLs at Stung Treng stayed about 0.18 m lower than its LTA value and at Kratie it was 0.24 m lower than its LTA value, respectively. WL at Kompong Cham was about 0.83 m lower than its LTA value.

¹ Near-real time data of hydro-meteorological monitoring at the Jinghong hydrological station is available at <https://portal.mrcmekong.org/monitoring/river-monitoring-telemetry>.

Based on hydrological phenomenon, the contribution of inflow water from the upstream of Lancang-Mekong in China to the Mekong mainstream is about 16% in total during the wet season from June to October and about 25% in total during the dry season from November to May. The whole inflow of water into the LMB is influenced by rainfall at the Mekong mainstream and its tributaries during the wet season.

Chiang Saen and Luang Prabang

Water level during 28 Nov-04 Dec 2023 at Thailand’s Chiang Saen increased in between 1.84 m to 2.10 m, staying about 1.33 m lower than its Long-Term-Average (LTA) during the report period. This value is considered normal level (referred to PMFM’s indicator). When compared to last week, this week’s water level is relatively higher.

Water level at the Luang Prabang station in Lao PDR was decreased about 0.20 m, during the reporting period. Compared to last week, the water level shows about 2.03 m higher than its LTA value and staying about 0.34 m below its historical maximum value. The water levels at Chiang Saen and Luang Prabang are shown in [Figure 8](#) below.

Being situated between the upstream (Nam Beng, Nam Ou, Nam Suong, and Nam Khan) and downstream (Xayaburi) hydropower dams, the Luang Prabang station has a unique characteristic as it is influenced by the operations of all its surrounding dams. **Thus, the water level at this station can possibly change very rapidly during the early dry season.**

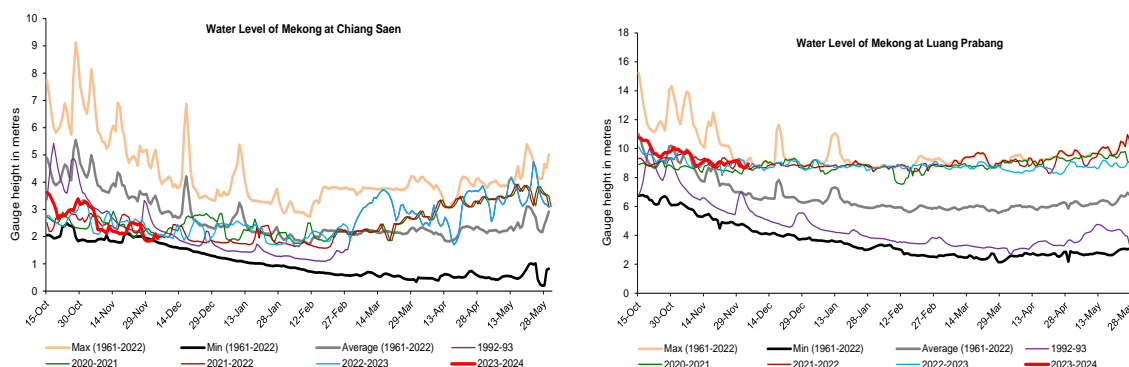


Figure 8. Water levels at Chiang Saen in Thailand and Luang Prabang in Lao PDR.

Chiang Khan, Vientiane-Nong Khai and Paksane

The water level at Chiang Khan in Thailand (downstream of the Xayaburi dam) decreased about 0.82 m, during the reporting week. It showed 1.77 m below its LTA. Moreover, the water level downstream at Vientiane in Lao PDR decreased from 3.22 m to 2.73 m and stayed about 0.53 m lower than its LTA during 28 Nov-04 Dec 2023. At Nong Khai station in Thailand, the water level decreased about 0.40 m during the reporting period. It showed 1.75 m lower than its LTA value, but still considered normal water level (based on PMFM indicator). At Paksane in Lao PDR, water level decreased about 0.06 m staying about 1.07 m lower than its LTA value. The recently decreased water levels were obviously due to low rainfall and inflow from upstream and water operation from upstream in the sub-catchment area. The water levels at Vientiane and Paksane are shown in [Figure 9](#) below.

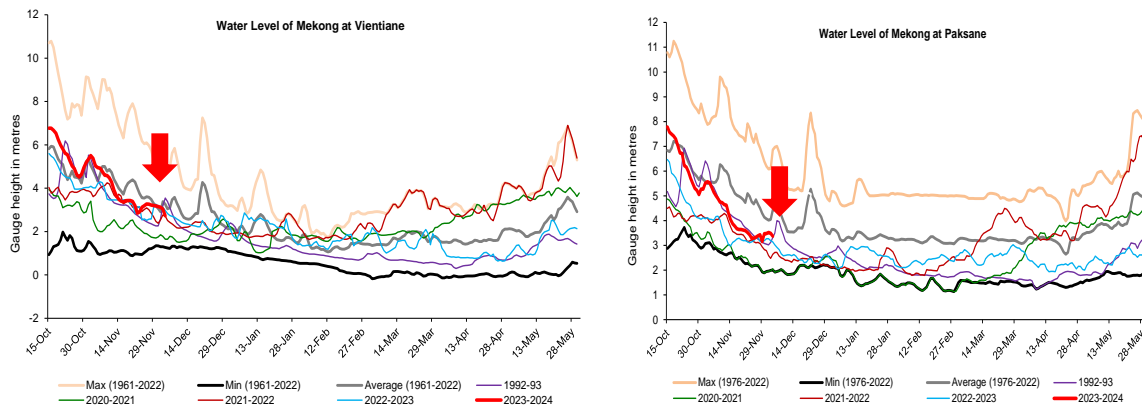


Figure 9. Water levels Vientiane and Paksane in Thailand and Lao PDR.

Nakhon Phanom to Pakse

Moreover, water levels from Nakhon Phanom in Thailand to Savannkhet in Lao PDR increased between 0.12 m and 0.18 m, while at Khong Chiam in Thailand and Pakse in Lao PDR decreased in between 0.50 m and 0.57 m. Water levels for most of the stations are staying lower to their LTA levels. [Figure 10](#) shows the water levels at Nakhon Phanom and Pakse stations.

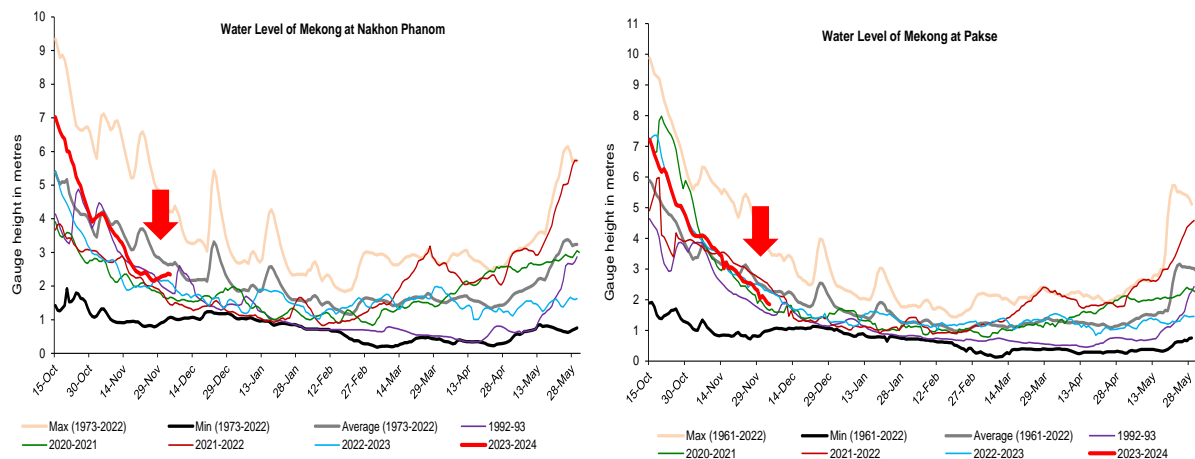


Figure 10: Water levels at Nakhon Phanom and Savannakhet of Thailand and Lao PDR.

Stung Treng to Kompong Cham/Phnom Penh to Koh Khel/Neak Luong

Due to the fact that there was low rainfall from the upstream part of the Mekong River and the 3S river (Sekong, Se San, and Sre Pok), the water levels from Stung Treng to Kratie in Cambodia decreasing during 28 Nov and 04 Dec 2023, respectively. The water level at Stung Treng decreased about 0.10 m, while at Kratie it decreased about 0.20 m. Water levels at Stung Treng is staying about 0.14 m lower than its LTA value and at Kratie is about 0.47 m lower than its LTA value. Water levels at these two stations were considered normal during the starting dry season (as showed in [Figure 11](#)).

This week, the water levels at Kompong Cham were down about 0.48 m and stayed 0.83 m below its LTA value, which considered low.

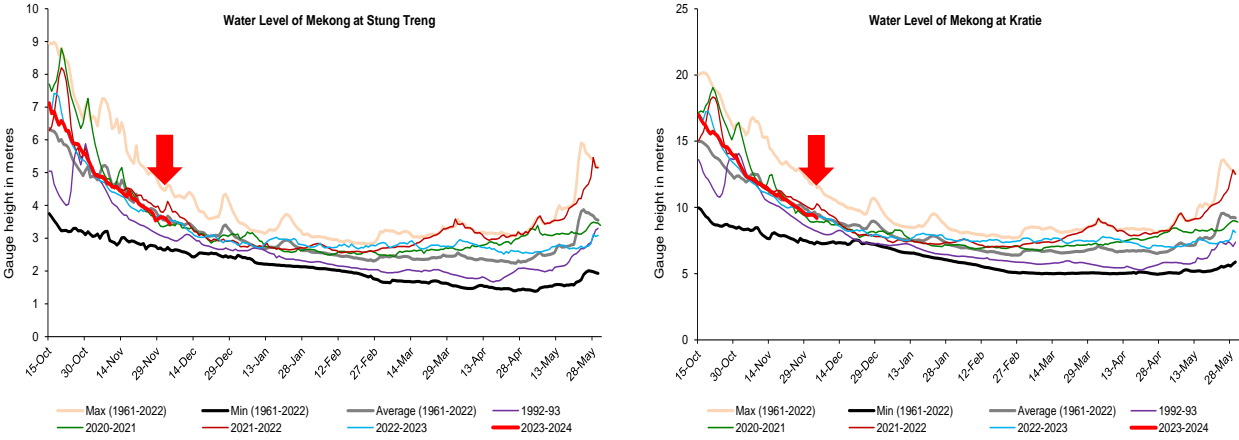


Figure 11: Water levels at Stung Treng and Kratie on the Mekong River.

At Chaktomuk on the Bassac River, the water level was down by about 0.40 m and stayed 1.01 m lower than its LTA value; while at Koh Khel, water level decreased about 0.34 m, staying 0.44 m lower than its LTA value. It was observed that the WLS at Koh Khel and Neak Luong were affected by tidal from downstream stations of Tan Chau and Chau Doc in Viet Nam, during the dry season period. However, water level at Prek Kdam on the Tonle Sap Lake decreased about 0.36 m and stayed about 0.27 m lower than its LTA value. The water level at the Tonle Sap Lake (observed at Kompong Luong) was similar to Prek Kdam station’s water level. The recently decreased water level was due to less rain and inflow contributed from upstream of the Tonle Sap Lake area during the reporting period. The water level at the Tonle Sap Lake (observed at Kompong Luong) followed the same trend of Prek Kdam station’s water level. Water levels at these stations (Chaktommuk, Phnom Penh Port and Neak Luong) were mostly staying lower than their LTA level, which still considered normal water level.

Tidal stations at Tan Chau and Chau Doc

Like last week, the water levels from 28 November to 04 December 2023 at Viet Nam’s Tan Chau and Chau Doc were fluctuating between their LTA values due to daily tidal effects from the sea. The fluctuated levels were between 1.44 m and 2.19 m, which were lower than their LTA level, which considered normal at this stage. The current water level at Chau Doc is higher than its LTA value.

The Tonle Sap Flow

At the end of the wet season, when water levels along the Mekong River subside, the outflows of the Tonle Sap Lake return to the Mekong River and then to the Delta. This phenomenon normally takes place between September and October. Based on flow observation at Prek Kdam, the outflow of the Tonle Sap Lake took place since 23 October 2023. The flows of the Tonle Sap Lake were calculated based on a formula of rating-curves using by different water levels at Kompong Luong and Phnom Penh Port for slop and Prek Kdam as cross-section of the Lake. The formula of flows at the Tonle Sap Lake is as follows:

$$\text{Flows} = (\text{WL at Prek Kdam})^{1.2} * \text{SQRT} (\text{WL difference between PP port and Kampong Luong})$$

Where, WL is water level in m (msl).

Figure 12 shows the seasonal changes of the inflow/reverse flow and the outflow of the TSL at Prek Kdam in comparison with the flows of 2019, 2021 and 2022, and their LTA level (1997-2022). Up to December 04 of this reporting period, it was observed that the main outflow to Tonle Sap Lake increased due to average rainfall and inflows from upstream. This increased outflow of Tonle Sap Lake was most likely caused by inflows and rainfall from the catchment area. Up to this date, the outflow from the Tonle Sap Lake condition in 2023 is higher than 2020, 2021 and 2022 outflow conditions. It is noted that the outflow in early 2023 is still slightly higher than its LTA up to 04 December 2023. For next week, low-average rainfall is forecasted for the Tonle Sap area; thus, the outflow into the Tonle Sap Lake is likely to slightly decrease from the current level.

Figure 13 shows seasonal changes in monthly flow volumes up to 04 December 2023 for the Lake compared with the volumes in 2020, 2021, 2022 and their LTA, and the fluctuation levels (1997–2022). It shows that up to 04 December 2023, the water volume of the Tonle Sap Lake was staying slightly higher than its LTA (about 108 %), 2022, 2020 and 2021 during the same period. The figure is displayed in Table 1, which indicates that the Tonle Sap Lake has been affected by water levels from the Mekong River and its tributaries and rainfall in the surrounding sub-catchments and considered normal.

This demonstrates the influence of the relationships between the reverse flows, water levels of the Mekong River, inflows from tributaries, and the flow direction in the complex hydraulic environment of the Tonle Sap Lake during the wet and dry seasons. The data show that about half of the annual inflow volume into the Tonle Sap Lake has originated from the Mekong mainstream. Thus, flow alterations in the mainstream could have direct impact on the Tonle Sap Lake water levels and on its hydrology.

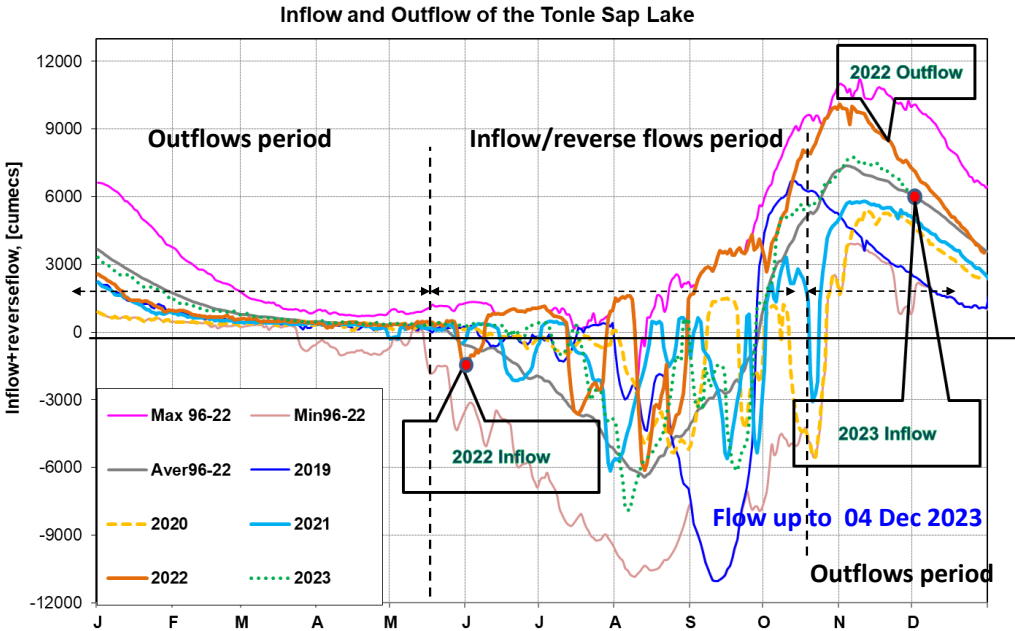


Figure 12: Seasonal change of inflows and outflows of Tonle Sap Lake.

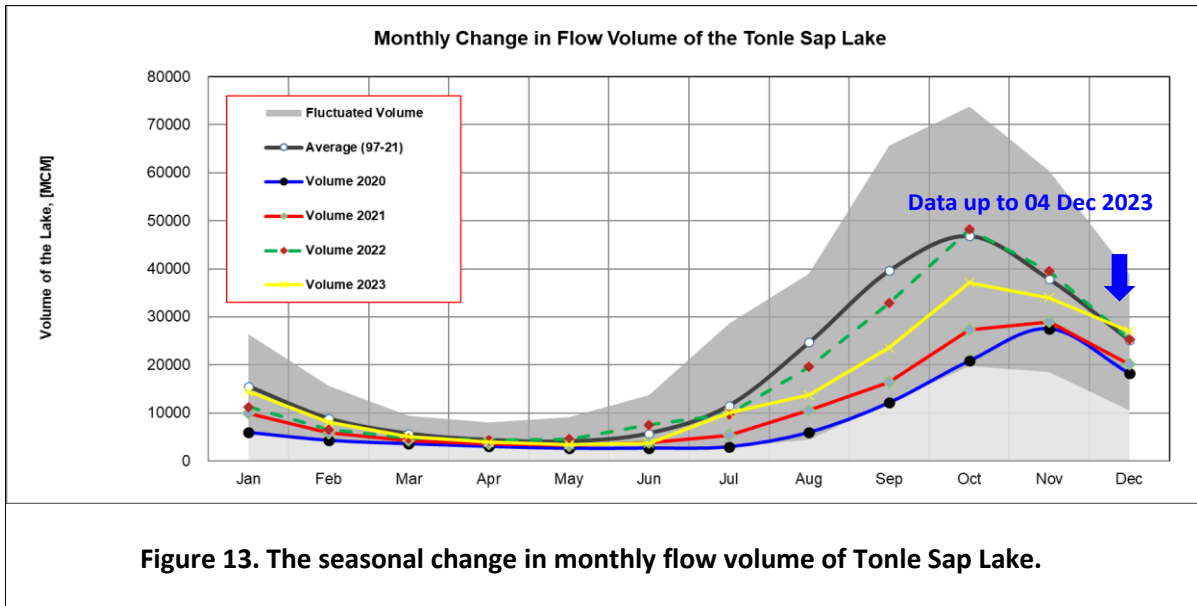


Figure 13. The seasonal change in monthly flow volume of Tonle Sap Lake.

Table 1. The monthly change in the flow volume of Tonle Sap Lake.

Month	LTA (97-22) [MCM]	Max Volume [MCM]	Min Volume [MCM]	Volume 2019 [MCM]	Volume 2020 [MCM]	Volume 2021 [MCM]	Volume 2022 [MCM]	Volume 2023 [MCM]	Volume in 2023 [%], compared with its LTA
Jan	15523.23	26357.53	5906.80	10285.31	5906.80	9923.80	11214.32	14422.11	92.91
Feb	8837.89	15596.22	4198.60	6019.30	4264.19	5832.97	6558.79	8069.29	91.30
Mar	5654.18	9438.24	3347.07	4354.62	3553.99	4264.88	4736.52	5080.64	89.86
Apr	4346.65	8009.14	2866.91	3667.47	2992.61	3556.68	4288.31	3884.16	89.36
May	4030.23	9176.93	2417.81	3266.43	2594.92	3240.78	4556.83	3438.66	85.32
Jun	5708.30	13635.01	2468.70	3517.06	2641.88	3798.29	7489.04	3689.97	64.64
Jul	11493.25	28599.56	2925.86	4001.99	2925.86	5346.73	9703.79	9953.41	86.60
Aug	24666.69	39015.12	4433.46	7622.71	5941.07	10547.80	19554.70	13694.57	55.52
Sep	39634.03	65632.35	12105.31	24194.19	12105.31	16382.34	32860.34	23550.60	59.42
Oct	46873.44	73757.23	19705.50	30358.38	20799.13	27318.21	48199.12	37141.40	79.24
Nov	37823.16	60367.33	18534.61	19112.65	27546.80	28982.93	39452.53	33929.52	89.71
Dec	25126.11	38888.95	10563.49	10577.29	18251.65	20170.76	25346.65	27077.19	107.77
	Critical situation, compared with historical Min values								
	Normal condition, compared with LTA (Long term average)								
	Low volume situation, compared with LTA values								
Unit: Million Cubic Meter (1 MCM= 0.001 Km ³)				LTA: Long-Term-Average					

4 Flash Flood in the Lower Mekong Basin

During the weekly monitoring period from 28 November to 04 December, the LMB received no rain to moderate rain in some areas.

According to the MRC-Flash Flood Guidance System (MRC-FFGS) and analysis, flash flood events were not detected during the reporting period over the LMB.

5 Drought Monitoring in the Lower Mekong Basin

Weekly drought monitoring from 20 to 26 November 2023

Drought monitoring data for 2023 are available from Monday to Sunday every week; thus, the reporting period is normally delayed by one day compared to Flood and Flash Flood reports. We adopt the Index of Soil Water Fraction (ISWF) data obtained from FFGS to represent soil moisture of agricultural indicator for both dry and wet seasons.

- **Weekly Standardised Precipitation Index (SPI1)**

Meteorological drought condition of the LMB from Nov 27 to Dec 3, as shown in [Figure 11](#), was normal all over the region. No meteorological drought threat was detected during the monitoring week.

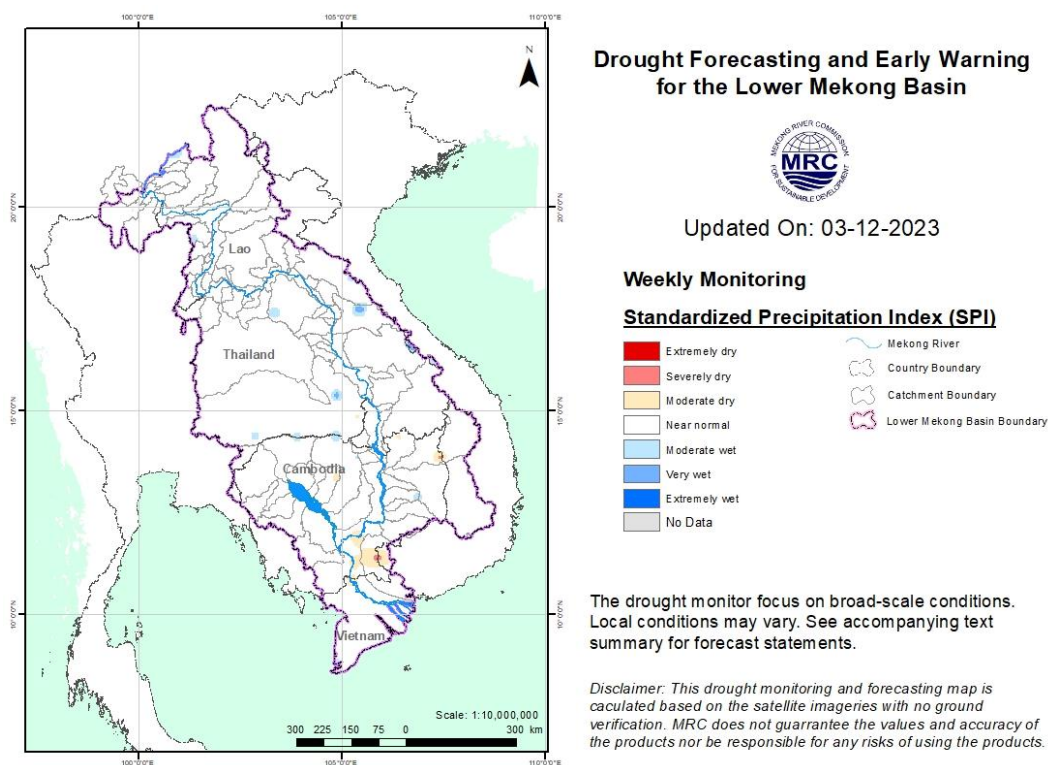


Figure 14: Weekly standardised precipitation index from Nov 27 to Dec 3.

- **Weekly Index of Soil Water Fraction (ISWF)**

Soil moisture conditions from Nov 27 to Dec 3, as displayed in [Figure 12](#), were severely dry from the north to the south due to absence of rainfall.

Note: The index of soil water fraction presents the current soil water fraction conditions compared with normal month; therefore, it normally shows extremely dry during dry season which is completely different from SPI that is standardized to its specific month of the years. However, this does not mean that the areas are threatened by agricultural drought as

generally during transition period of wet and dry seasons and dry season only the irrigated areas are used for agricultural plantation.

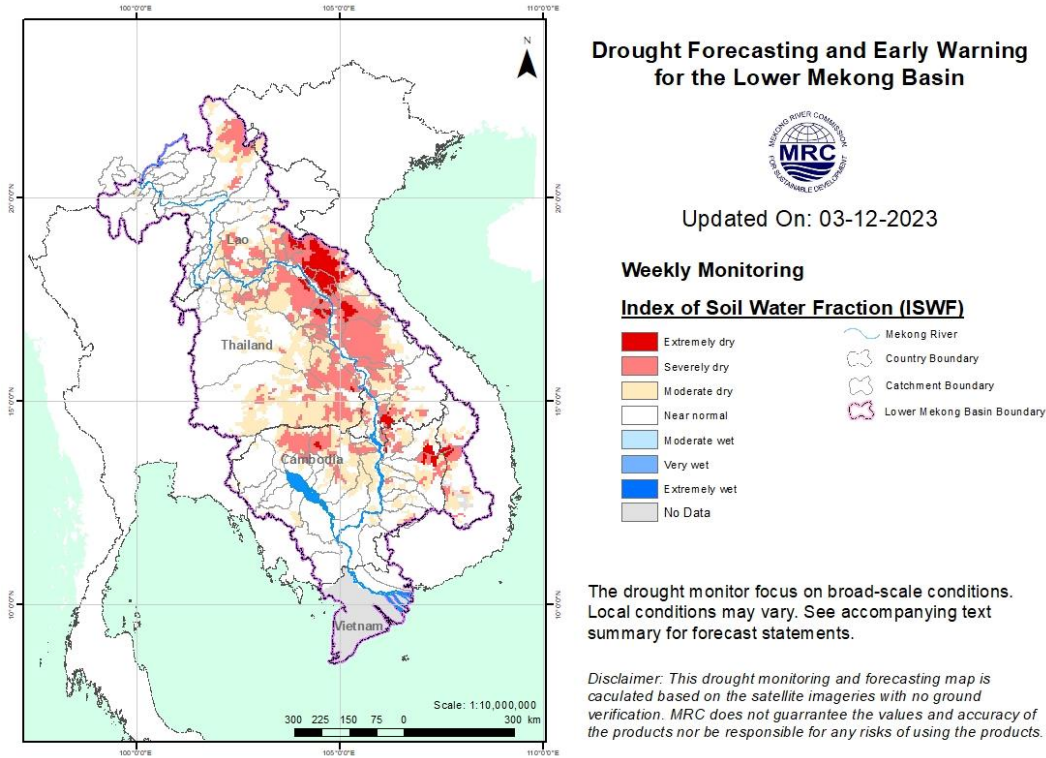


Figure 15: Weekly Index of Soil Water Fraction from Nov 27 to Dec 3.

- Weekly Combined Drought Index (CDI)**

With the dry conditions of soil moisture, the combined drought indicator (displayed in [Figure 13](#)) reveals that during Nov 27-Dec 3, the LMB was facing from moderate to severe drought in the eastern and south-eastern areas covering Xaysomboun, Borikhamxay, Khammuane, Savanakheth, Saravane, Champasack, Attapeu, Nong Khai, Udon Thani, Sakon Nakhon, Yasothon, Ubon Ratchathani, Preah Vihear, Kampong Thom, Stung Treng, Ratana Kiri, Kratie, Gia Lai, and Kon Tum. The drought phenomenon was caused by over dried soil moisture which is considered normal during dry season.

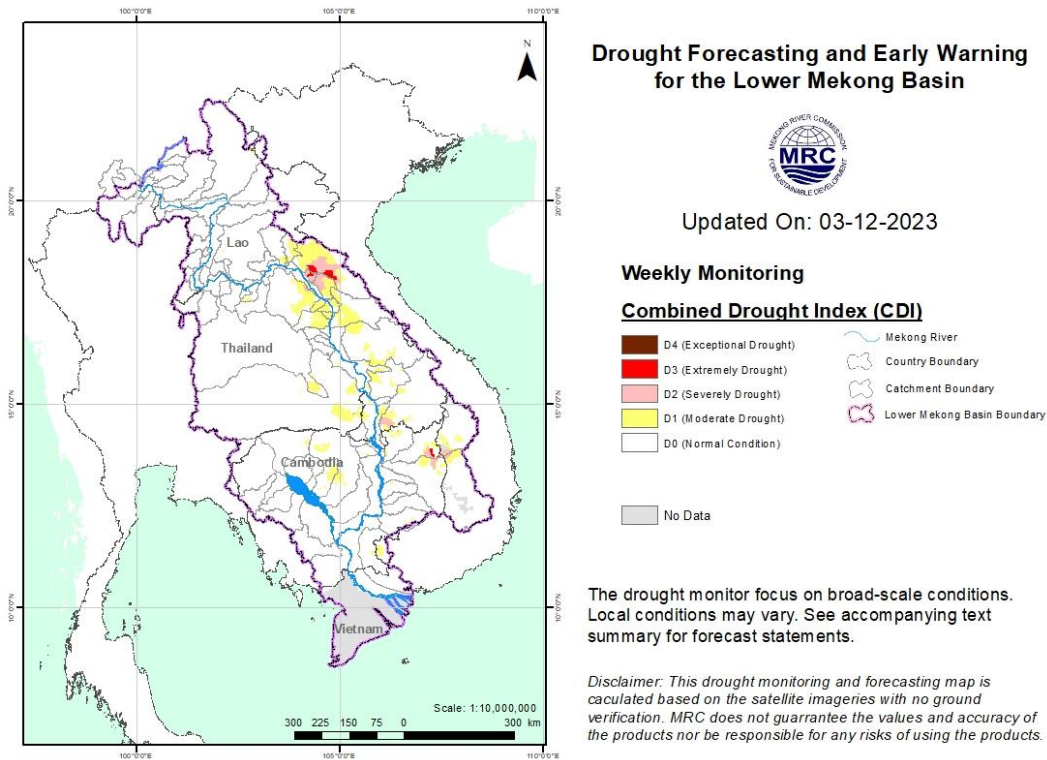


Figure 16: Weekly Combined Drought Index during Nov 27-Dec 3.

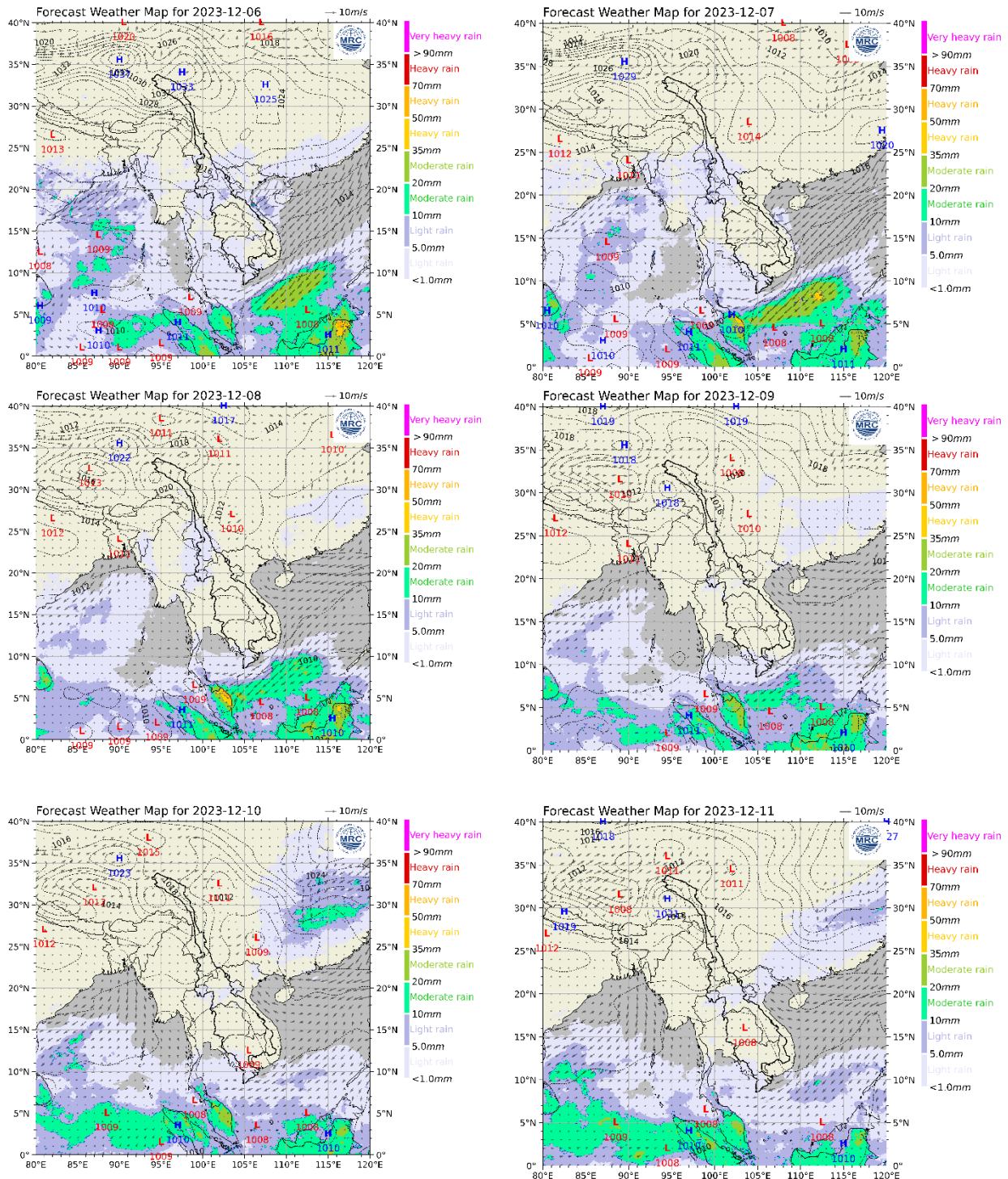
More information on Drought Forecasting and Early Warning (DFEW) as well as the explanation is available here: <http://droughtforecast.mrcmekong.org/templates/view/our-product>. DFEW provides not only weekly monitoring and forecasting information but also a three-month forecast of drought indicators with seasonal outlook which are updated every month based on international weather forecast models. Details on drought forecast are described in section 6.4 of this report.

6 Weather and Water Level Forecast and Flash Flood Information

6.1 Weather and rainfall forecast

During 06 – 12 December, based on result from the CHIRPS-GEFS, which merges observations from the Climate Hazards Group Infrared Precipitation with Stations (CHIRPS) data set with the Global Ensemble Forecast System (GEFS), no rain to light rain (0-10 mm/24h) is forecasted for the LMB area.

[Figure 17](#) shows accumulated rainfall forecast (24h) of the forecasting model using CHIRPS-GEFS data 06 - 12 December.



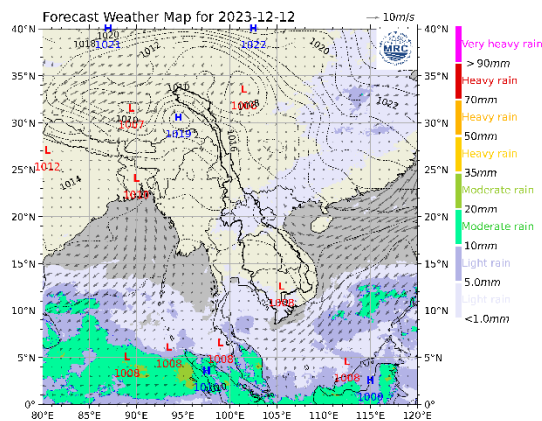


Figure 17: Accumulated rainfall forecast (24 h) based on the forecasting model using CHIRPS-GEFS.

6.2 Water level forecast

Chiang Saen and Luang Prabang

Based on December 04's weekly river monitoring bulletin, the weekly forecast water level at Chiang Saen in Thailand is expected to increase from 1.93 m to 2.14 m in the next seven days. The trend of water levels at these stations will continue staying below its LTA.

For Luang Prabang in Lao PDR, the water level is likely decreasing about 0.05 m during the same period. The current water level is about 2.00 m higher than its LTA and staying about 0.34 m lower than its historical maximum value. Next week low-average precipitation is forecasted in the area.

Chiang Khan, Vientiane-Nong Khai and Paksane

Water level at Chiang Khan station in Thailand is forecasted to be down about 0.05 m for the next seven days. At Vientiane in Lao PDR, water level will be down in between 0.19 m and and Nong Khai in Thailand will also down 0.14 m in the next seven days. At Paksane in Lao PDR, water level will decrease about 0.37 m due to some effect of low inflows from the upper catchments. Low to average rainfalls are forecasted in the area due to air pressure dominating in the upper sub-catchments. The water levels here will continue lower than their LTA.

Nakhon Phanom to Pakse

Water levels from Nakhon Phanom in Thailand to Pakse in Lao PDR will decrease from 0.23 to 0.46 m. Water levels at these stations will stay lower than their LTA levels. Next week some precipitation is forecasted in the area.

Stung Treng to Kompong Cham/Phnom Penh to Koh Khel/Neak Luong

From Stung Treng on the Mekong River in Cambodia, the water level will likely go down about 0.26 m, while at Kratie it will be down about 0.54 m over the next seven days. For Kompong Cham, the water level will be down about 0.39 m and stay below than its LTA. Low to average rainfall is forecasted for the area between Stung Treng and Kompong Cham during next week.

The water levels of the Tonle Sap Lake at Prek Kdam and Phnom Penh Port as well as at Phnom Penh's Chaktomuk on the Bassac River will down between 0.20 m and 0.35 m over the next seven days.

Water levels at most of the stations (excepted at Luang Prabang) will continue to stay lower than their LTA value, particularly in the upper and the lower parts of the region from the Chiang Khan to downstream in Phnom Penh, Koh Khel as well as from Tonle Sap in Prek Kdam to Phnom Penh Port, including the Tonle Sap Lake. Low to average rainfall is forecasted for the low-lying area of Cambodia next week.

Tidal stations at Tan Chau and Chau Doc

For Viet Nam's Tan Chau on the Mekong River and Chau Doc on the Bassac River, water levels will be moving down between their LTA and minimum values following daily tidal effects from the sea.

[Table 3](#) shows the weekly River Monitoring Bulletin issued on December 04. Results of the started weekly river monitoring bulletin are also available at http://ffw.mrcmekong.org/bulletin_wet.php. Tables for weekly updated water levels and rainfall at the Key Stations are presented in **Annex A**.

6.3 Flash Flood Information

Flash flood events are not likely to happen in the LMB next week. However, local heavy rain in a short period of time might still be possible with unexpected short flash floods. During the dry season if extreme weather occurs, the information on flash flood guidance for the next one, three, and six hours is updated at <http://ffw.mrcmekong.org/ffg.php>.

Further detailed information on Flash Flood Information Warning, as well as on its explanation, is available for download [here](#).

6.4 Drought forecast

There are several climate-prediction models with different scenarios in the upcoming months. The MRC's DFEWS adopts an ensemble model called the North America Multi-Model Ensemble (NMME) with a downscaling method to 5km resolution.

[Figure 18](#) below shows the Combined Drought Indicator (CDI) forecast for December 2023, January and February 2024 over the LMB area.

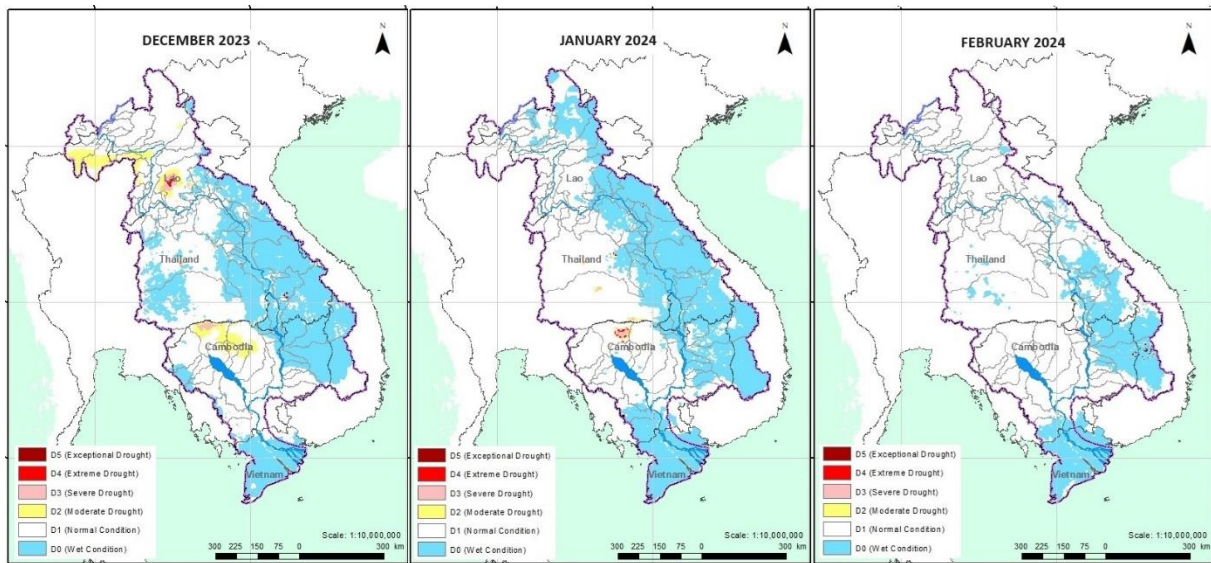


Figure 18. Monthly forecast of CDI for Dec 2023, Jan and Feb 2024.

Figure 18 above shows that in December it is expected to bring moderate to severe drought conditions to certain areas in the north and south, including Chiang Mai, Chiang Rai, Phayao, Xayaburi, Vientiane, Xaysomboun, Otdar Meanchey, Preah Vihear, and Siem Reap. January is forecasted to see severe drought in parts of Siem Reap and Kalasin, and moderate drought in Maha Sarakham, Surin, Nakhon Phanom, and Si Saket. February 2024, however, is not expected to have any drought in the LMB area.

Table 2. Weekly River Monitoring Bulletin.



Mekong Bulletin

Mekong River Commission Secretariat (MRCS)

Regional Flood and Drought Management Centre (RFDMC)

P.O. Box 623 #576, National Road #2, Chak Angre Krom, Meanchey, Phnom Penh, Cambodia

Tel: (855-23) 425353, Fax: (855-23) 425363, Email: floodforecast@mrcmekong.org

Forecast period from: 05 December to 11 December 2023

Date: 04 December 2023

LOCATION	Country	Observed Rainfall (mm)	Zero gauge above M.S.L (m)	Min water level against zero gauge (m)	Observed W. level against zero gauge (m)		Forecasted Water Levels (m)						
					03-Dec	04-Dec	05-Dec	06-Dec	07-Dec	08-Dec	09-Dec	10-Dec	11-Dec
Jinhong		2.0	-	-	535.21	535.22							
Chiang Saen		0.0	357.110	0.00	2.10	1.93	1.90	1.89	1.91	1.94	2.00	2.06	2.14
Luang Prabang		0.0	267.195	2.53	8.72	8.94	8.75	8.70	8.68	8.71	8.75	8.82	8.89
Chiang Khan		0.0	194.118	1.91	4.75	4.65	4.70	4.60	4.56	4.54	4.56	4.59	4.63
Vientiane		0.0	158.040	-0.28	3.04	2.73	2.62	2.66	2.55	2.50	2.47	2.50	2.54
Nongkhai		0.0	153.648	0.33	2.18	1.90	1.82	1.84	1.76	1.72	1.70	1.73	1.76
Paksane		0.0	142.125	0.10	3.49	3.37	3.15	3.10	3.07	3.02	3.00	2.98	3.00
Nakhon Phanom		0.0	130.961	0.18	2.37	2.34	2.22	2.01	1.97	1.95	1.91	1.90	1.88
Thakhek		0.0	129.629	1.38	3.57	3.56	3.46	3.26	3.22	3.18	3.14	3.12	3.10
Mukdahan		0.0	124.219	0.72	2.60	2.62	2.60	2.51	2.36	2.31	2.29	2.26	2.25
Savannakhet		0.0	125.410	-0.65	1.31	1.33	1.31	1.27	1.19	1.15	1.14	1.12	1.10
Khong Chiam		0.0	89.030	1.02	3.05	3.03	3.06	3.00	2.90	2.74	2.67	2.63	2.60
Pakse		0.0	86.490	0.03	1.90	1.85	1.82	1.77	1.69	1.56	1.52	1.50	1.48
Stung Treng		0.0	36.790	0.32	3.52	3.44	3.41	3.39	3.35	3.29	3.21	3.20	3.18
Kratie		0.0	-1.080	3.06	9.37	9.20	9.06	9.00	8.95	8.88	8.80	8.70	8.66
Kompong Cham		0.0	-0.930	0.65	5.03	4.92	4.80	4.72	4.69	4.66	4.62	4.58	4.53
Phnom Penh (Bassac)		0.0	-1.020	1.58	4.25	4.19	4.12	4.07	4.05	4.04	4.02	4.00	3.97
Phnom Penh Port		nr	0.000	0.14	3.19	3.12	3.07	3.02	3.00	2.98	2.96	2.94	2.91
Koh Khel		0.0	-1.000	1.52	4.08	3.99	3.93	3.90	3.86	3.82	3.78	3.77	3.75
Neak Luong		0.0	-0.330	0.81	3.18	3.15	3.10	3.07	3.02	2.97	2.93	2.89	2.85
Prek Kdam		0.0	0.080	0.58	4.49	4.48	4.40	4.32	4.28	4.20	4.13	4.05	4.00
Tan Chau		0.0	0.000	-0.37	1.50	1.44	1.40	1.36	1.32	1.28	1.25	1.22	1.20
Chau Doc		nr	0.000	-0.60	1.59	1.50	1.48	1.44	1.40	1.37	1.34	1.32	1.30

REMARKS:

-: not available.
 *: reference stations without forecast.
 nr: no rain.

River Flood Forecaster

KHEM Sothea

NOTE: Discharge at Luang Prabang may be influenced by hydropower operations (at both upstream and downstream).
 For more info, please refer to this link:
<http://www.mrcmekong.org/>; http://ffw.mrcmekong.org/bulletin_wet.php; <http://ffw.mrcmekong.org/reportflood.php>

7 Summary and Possible Implications

7.1 Rainfall and its forecast

This week, rainfall was observed from Neak Luong in Cambodia to Tan Chau and Chau Doc in Viet Nam along the Mekong River were varied between 1.00 mm and 40.00 mm. The highest rainfall was observed at Koh Khel. Compared with last week's amount, the rainfall this week was considered low in the lower part of the Mekong region.

Based on the forecasted satellite data, rainfall is forecasted for some areas of the LMB with the value range from 05.00 mm to 50.00 mm for the next seven days. The forecasting model using CHIRPS-GEFS data, moreover, shows average rainfall (<60 mm) is likely to take place in the Mekong region from 05 to 11 December 2023.

7.2 Water level and its forecast

The MRC's observed water level (WL) at Jinghong showed fluctuated level from 535.20 m to 535.73 m between 28 November and 04 December 2023 (recorded on 7:00 am) while the outflow varied from 808.00 m³/s to 1,170.00 m³/s between 28 Nov and 04 Dec 2023.

Mekong water levels this week remain as normal condition based on the PMFM indicators— with 1 out of 22 stations have water levels higher than their long-term average. In general, this hydrological condition is influenced by the inflows from the upper Mekong River in China and dam operations in the tributaries of the Lower Mekong River Basin.

Stay updated with our river monitoring and forecasting to better prepare for flood and drought events. Find more details at <https://www.mrcmekong.org/>.

Up to 04 December 2023, the flow volume of the Tonle Sap Lake is slightly higher than its LTA (about 107%). From next week, the flow is expected to be decreasing due to below-average rainfall is forecasted in the inflow catchments of the Tonle Sap Lake.

From Stung Treng to Kratie, the water levels will most likely go down, while at Kompong Cham they will also go down. The water levels – at Neak Luong on the Mekong River, from Prek Kdam to Phnom Penh Port on the Tonle Sap, and from Chaktomuk to Koh Khel on the Bassac – are forecasted to stay below their LTA.

The situation in Tan Chau on the Mekong River and Chau Doc on the Bassac River is expected to remain fluctuating. In Tan Chau and Chau Doc, the fluctuation of water levels will move lower than their LTA value during the monitoring period, which will **considered normal**.

Since the third week of October 2023, water levels across most monitoring stations in the LMB have decreased due to the low-average rainfall but still staying higher than their LTA value (at Vientiane, Khong Chiam, Pakse and Koh Khel). The preliminary analysis of the hydrological conditions in the LMB over July–December 2020 and from November 2020 to May 2021 was done as [Situation Report](#), which can be used as reference for the trend of water level and flows of the Mekong River Basin.

The contribution to the Mekong River's flow from the UMB in China (Yunnan component) is about 16% by the time the river discharges through the Mekong Delta into the Sea. By far the major contribution comes from the two major 'left-bank' (Eastern) tributaries between Vientiane – Nakhon Phanom and Pakse – Stung Treng, which together contribute more than 40% of the flows.

7.3 Flash flood and its trends

With the predicted of rainfall for the coming week as mentioned earlier in [section 6.1](#), major flash floods are not likely to happen in the LMB.

7.4 Drought condition and its forecast

During Nov 27-Dec 3, the LMB was facing from moderate to severe drought in the eastern and south-eastern areas covering Xaysomboun, Borikhamxay, Khammuane, Savanakhet, Saravane, Champasack, Attapeu, Nong Khai, Udon Thani, Sakon Nakhon, Yasothon, Ubon Ratchathani, Preah Vihear, Kampong Thom, Stung Treng, Ratana Kiri, Kratie, Gia Lai, and Kon Tum. The drought phenomenon was caused by over dried soil moisture which is considered normal during dry season.

In December, it is expected to bring moderate to severe drought conditions to certain areas in the north and south, including Chiang Mai, Chiang Rai, Phayao, Xayaburi, Vientiane, Xaysomboun, Otdar Meanchey, Preah Vihear, and Siem Reap. January is forecasted to see severe drought in parts of Siem Reap and Kalasin, and moderate drought in Maha Sarakham, Surin, Nakhon Phanom, and Si Saket. February 2024, however, is not expected to have any drought in the LMB area.

Annex A: Tables for weekly updated water levels and rainfall at the Key Stations

Table A1: Weekly observed water levels

2023	Jinghong	Chiang Saen	Luang Prabang	Chiang Khan	Vientiane	Nongkhai	Paksane	Nakhon Phanom	Thakhek	Mukdahan	Savannakhet	Khong Chiam	Pakse	Stung Treng	Kratie	Kompong Cham	Phnom Penh (Bassac)	Phnom Penh Port	Koh Khel	Neak Luong	Prek Kdam	Tan Chau	Chau Doc
28/11/2023	535.20	1.91	9.14	5.47	3.22	2.30	3.43	2.21	3.43	2.44	1.18	3.60	2.36	3.54	9.67	5.40	4.59	3.53	4.33	3.36	4.84	2.03	2.19
29/11/2023	535.30	1.84	9.16	5.45	3.20	2.26	3.15	2.23	3.45	2.48	1.20	3.53	2.30	3.59	9.50	5.28	4.50	3.45	4.30	3.32	4.77	1.96	2.13
30/11/2023	535.32	1.84	8.80	5.41	3.18	2.27	3.47	2.28	3.50	2.52	1.25	3.42	2.04	3.64	9.42	5.16	4.43	3.38	4.16	3.24	4.69	1.79	1.95
01/12/2023	535.73	1.86	8.78	5.35	3.15	2.24	3.48	2.31	3.53	2.55	1.27	3.32	2.12	3.64	9.44	5.10	4.39	3.34	4.14	3.22	4.62	1.74	1.84
02/12/2023	535.23	1.90	8.66	5.05	3.12	2.19	3.52	2.32	3.54	2.57	1.28	3.20	2.03	3.60	9.47	5.08	4.38	3.33	4.12	3.19	4.56	1.57	1.63
03/12/2023	535.21	2.10	8.72	4.75	3.04	2.18	3.49	2.37	3.57	2.60	1.31	3.05	1.90	3.52	9.37	5.03	4.25	3.19	4.08	3.18	4.49	1.50	1.59
04/12/2023	535.22	1.93	8.94	4.65	2.73	1.90	3.37	2.34	3.56	2.62	1.33	3.03	1.85	3.44	9.20	4.92	4.19	3.12	3.99	3.15	4.48	1.44	1.50

Table A2: Weekly observed rainfall

2023	Jinghong	Chiang Saen	Luang Prabang	Chiang Khan	Vientiane	Nongkhai	Paksane	Nakhon Phanom	Thakhek	Mukdahan	Savannakhet	Khong Chiam	Pakse	Stung Treng	Kratie	Kompong Cham	Phnom Penh (Bassac)	Phnom Penh Port	Koh Khel	Neak Luong	Prek Kdam	Tan Chau	Chau Doc	
28/11/2023	0	0	0	0	0	0	0	0	0	0	0	0	0	0	0	0	0	0	0	0	0	0	0	0
29/11/2023	0	0	0	0	0	0	0	0	0	0	0	0	0	0	0	0	0	0	0	0	0	0	0	0
30/11/2023	0	0	0	0	0	0	0	0	0	0	0	0	0	0	0	0	0	0	0	0	0	0	0	0
01/12/2023	0	0	0	0	0	0	0	0	0	0	0	1	0	0	0	0	0	0	0	0	0	0	0	0
02/12/2023	0	0	0	0	0	0	0	0	0	0	0	0	0	0	0	0	0	0	0	0	0	0	0	0
03/12/2023	0.5	0	0	0	0	0	0	0	0	0	0	0	0	12.5	0	0	23.7	0	40	6.4	0	0	0	0
04/12/2023	2	0	0	0	0	0	0	0	0	0	0	0	0	0	0	0	0	0	0	0	0	0	0	0
Sum	2.5	0.0	0.0	0.0	0.0	0.0	0.0	0.0	0.0	0.0	0.0	1.0	0.0	12.5	0.0	0.0	23.7	0	40.0	6.4	0.0	0.0	0.0	0.0



Mekong River Commission Secretariat

P. O. Box 6101, 184 Fa Ngoum Road, Unit 18 Ban Sithane Neua, Sikhottabong District, Vientiane 01000, Lao PDR
Tel: +856 21 263 263. Fax: +856 21 263 264 www.mrcmekong.org

© Mekong River Commission 2020